



Program Brochure

Bridging
the Gap between
Life Sciences and
Management

offered by
State University

htw

Hochschule für Technik
und Wirtschaft Berlin

University of Applied Sciences



International
MBA & Engineering
Life Science Management



Going from Research into Management

“ I had a pure scientific career and was looking to explore Management roles when applying to this program. During my master thesis semester and internship with Fyoni-Bio I found my place in Management leading to the role of Marketing Manager. I can fully recommend this program as stepping stone into the industry.”

PhD Ekaterina Komisarova - Marketing Manager at FyoniBio, LSM Alumna



Start-up Success

“ The LSM program guided my transition into the pharmaceutical management field by equipping me with essential life science management and medical affairs knowledge. The small size of the class enables in-depth discussions among students as well as with lecturers. For me the LSM Programme is a stepping stone leading up to a management position within one of the most powerful industries.”

Jaime Rossello Coll - CEO and Co-founder of Silica Corpora, LSM Alumnus



Applied Sciences in Digital Health

“ During my studies I had the chance to work as a consultant in Digital Health in Life Sciences as well as do an internship with an international pharmaceutical company as Digital Health Strategy Associate. It has been a steep learning curve applying my new gained knowledge in the industry.”

Kagure Mugo - Founder of STEM Whizz and Digital Business System Analyst, LSM Alumna



Germany as life science and health hub

“ I wanted to enhance my overall understanding of the pharmaceutical industry within the context of German public health. Now, having completed two semesters, I’ve not only gained valuable knowledge but also had the opportunity to collaborate and learn from talented colleagues across various fields. I commend myself for embracing this challenging journey.”

HyeJeen Kim - National Health Insurance Services South Korea, LSM Alumna



Ph.D. Soham Saha

Lecturer with academic and industry experience

CEO of Medinsights - new therapeutics & solutions / Expert in Neuroscience, Pharmaceutical Sciences & Biomedical Research

» [more about Ph.D. Soham Saha](#)

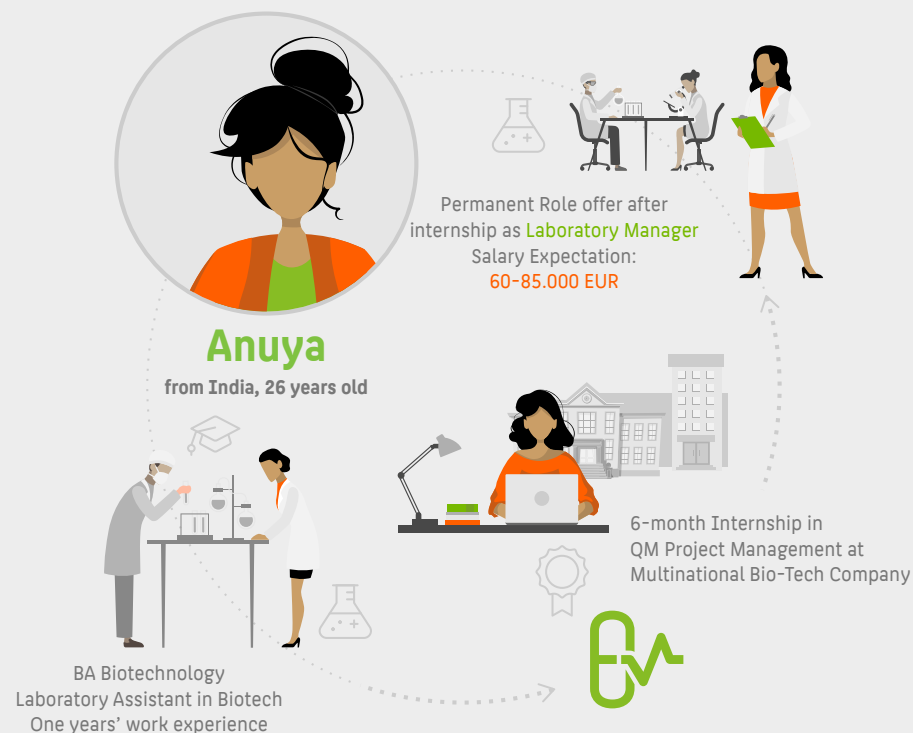


Dr. Maren von Fritschen

Lecturer and Leader in Regulatory Affairs

Head of Regulatory Policy EU at Moderna / Chair of the Drug Information Association (DIA) Regional Advisory Group for Europe, Middle East, and Africa

» [more about Dr. Maren von Fritschen](#)



Student journeys



Unlock the next stage of Your Career

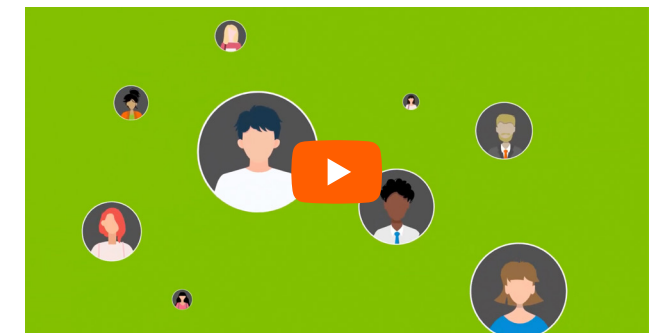
Become an Expert in Life Science Management - unique in combining industry specific knowledge with management expertise.

Amazing Career Opportunities in Pharma, Bio-Tech, Med-Tech, Healthcare, multinationals, SMEs, public authorities or build your own start-up.

Build your Management Skills to work in Senior Positions - Transdisciplinary and Practical approach - stimulating project work, challenging case studies taught by acclaimed professors and lecturers such as renowned solicitors in patent and intellectual property, regulatory experts in health sciences, accomplished biomanufacturing / bio-tech engineers and business experts etc.

Step inside Real Companies - Through the company engagement program, gain firsthand look at management practices. Enjoy unique professional opportunities.

Live and Study in the "Health Capital" of Germany.



Life Science Management Modules



Gain Multidisciplinary Management Competencies and Skills through **Life Science specific Modules**.

Life Science Engineering

- Project Management in Regulatory Affairs and Clinical Trials
- LSE 1: Molecular and Cellular Methods
- LSE 2: Commercial Engineering
- Project: Management and Innovation



Artificial Intelligence
in Life Sciences

Life Science Management

- Special Topics in Sustainable Business Administration



Corporate Finance and Controlling
- Gain Bloomberg Certificate

- Human Resources Management and Leadership
- Strategic Marketing in Life Sciences

Technology and Engineering

- Project Management for Production Processes
- Project: Engineering Management

Elective Modules

- New Technologies and Products
- Advanced Processes in Life Science Industries
- Intellectual Property Management and Contract Law
- Business Ethics and Corporate Governance



Empowerment – merge your own study with real life science topics – lead, innovate and succeed.



Inclusion – Study with like minded professionals from diverse life science backgrounds, high academic degrees and global minds.



Connect and build your Professional Community with the LSM Community in international Life Sciences.



Key Program Facts

Duration:

18 months, full-time

Language:

English only

Study mode:

[Only on campus](#)

Semester:

Starts in Winter Semester

Total Tuition Fees:

16.000 EUR (paid in instalments)

Semester Fee:

[Approx. 360 EUR](#)

Application Deadline:

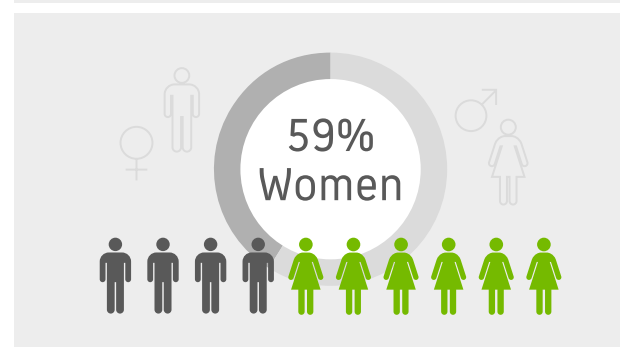
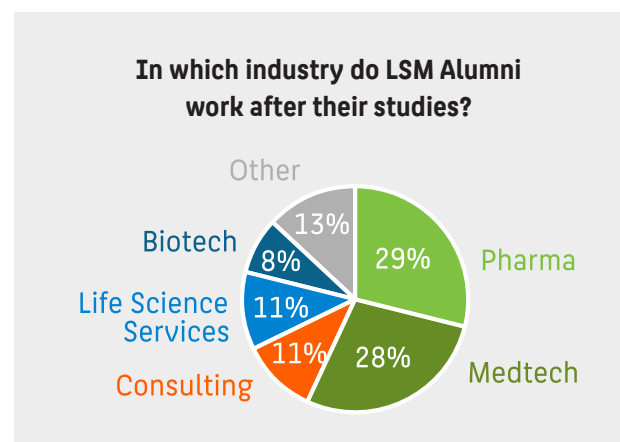
Please check the [LSM Website](#)

Application Form:

[LSM Online Application Form](#)

Largest University of Applied Sciences in Berlin, Germany - HTW Berlin

The [Hochschule für Technik und Wirtschaft Berlin \(HTW Berlin\)](#), also known as the University of Applied Sciences Berlin, is the largest university of applied sciences in Berlin, Germany. It was founded in 1994 and currently has around 14,000 students. HTW Berlin has two main campuses: Treskowallee campus in Berlin-Karlshorst and [Wilhelminenhof campus](#) in Berlin-Oberschöneweide, located directly on the River Spree.



HTW Berlin is known for its practice-oriented education and strong partnerships with industry. The university consistently receives [good ratings in rankings](#), with numerous programmes appearing in the top rankings.

Research is a core focus at HTW Berlin, with over 150 externally funded research projects carried out annually in collaboration with industry partners. The university's research agenda covers a range of topics, including climate-friendly energy supply, advanced health research, digital and creative industries, and the preservation of cultural heritage.



How to Apply?

Before you apply:

- Make sure you are eligible to study this program, read the [candidate requirements](#) for academic qualifications and work experience
- Think about how you would finance the program fees, checking [fees and financing](#)
- Collect all necessary documents in PDF Format:
 1. Copy of your passport or identity card
 2. Copy of all your degree certificates together with your grade transcript and if necessary a translation into English or German
 3. Proof of minimum 1 years work experience
 4. Proof of English language proficiency
 5. Motivational letter

Apply now



No cost for application. Do not use Uni assist.

Fees & Financing

Total fees for this 3 semester degree include:

[tuition fees](#) of 16,000EUR plus

[semester fees](#) per semester of currently approximately 360EUR.

Tuition fees may be paid in three main instalments. First instalment of 5.500EUR as to deadline in the acceptance documents, 5.500EUR before the second semester and 5.000EUR before the third semester.

Scholarships

You can apply to numerous organisations for scholarships, for example to DAAD, to party related foundations, or business affiliated institutions.

DAAD You can find information on various types of scholarships in the [DAAD scholarship database](#).

[LSM Professional Enhancement Grant \(PEG\)](#)

One student will be funded 50% of their LSM tuition fees. To be eligible for consideration, applicants must have been accepted to the LSM program and fulfil a minimum of one of the PEG application selection criteria.



Discuss your **aspirations**.
Apply with **confidence**.
Get **accepted**.



Please feel free to contact us with any queries regarding the programme and your studies or just to say “Hallo”:

admission-lsm@htw-berlin.de

**Hochschule für Technik
und Wirtschaft Berlin**



www.htw-berlin.de
lsm.htw-berlin.de

